

# Some Collaborative Practices To foster Philanthropy Sector and Social Innovation in China

---

Wang Weina (Vera)  
Vice President of NPI



- ✓ The Foundation for Social Entrepreneurs
- ✓ Is the leading provider of support to social entrepreneurs in the UK
- ✓ Hosted **GSEN** (Global Social Entrepreneurship Network ) in June, 2013

“**GSEN** will play a critical role in improving the accessibility and quality of support for social entrepreneurs around the world.”

Cliff Prior, CEO of UnLtd



Supports individuals, who have their ventures firmly rooted in delivering positive social change, by

- ☑ Awards of funding
- ☑ Ongoing advice, networking and practical support



- ! Thousands of social entrepreneurs
- ! 170 partners around the world
- ! Ventures impact > 1,000,000 people/year
- ! 76% of ventures are still running after 3 years

# The journey of a social entrepreneur: learning by doing

We've identified four stages in the early development of a social venture

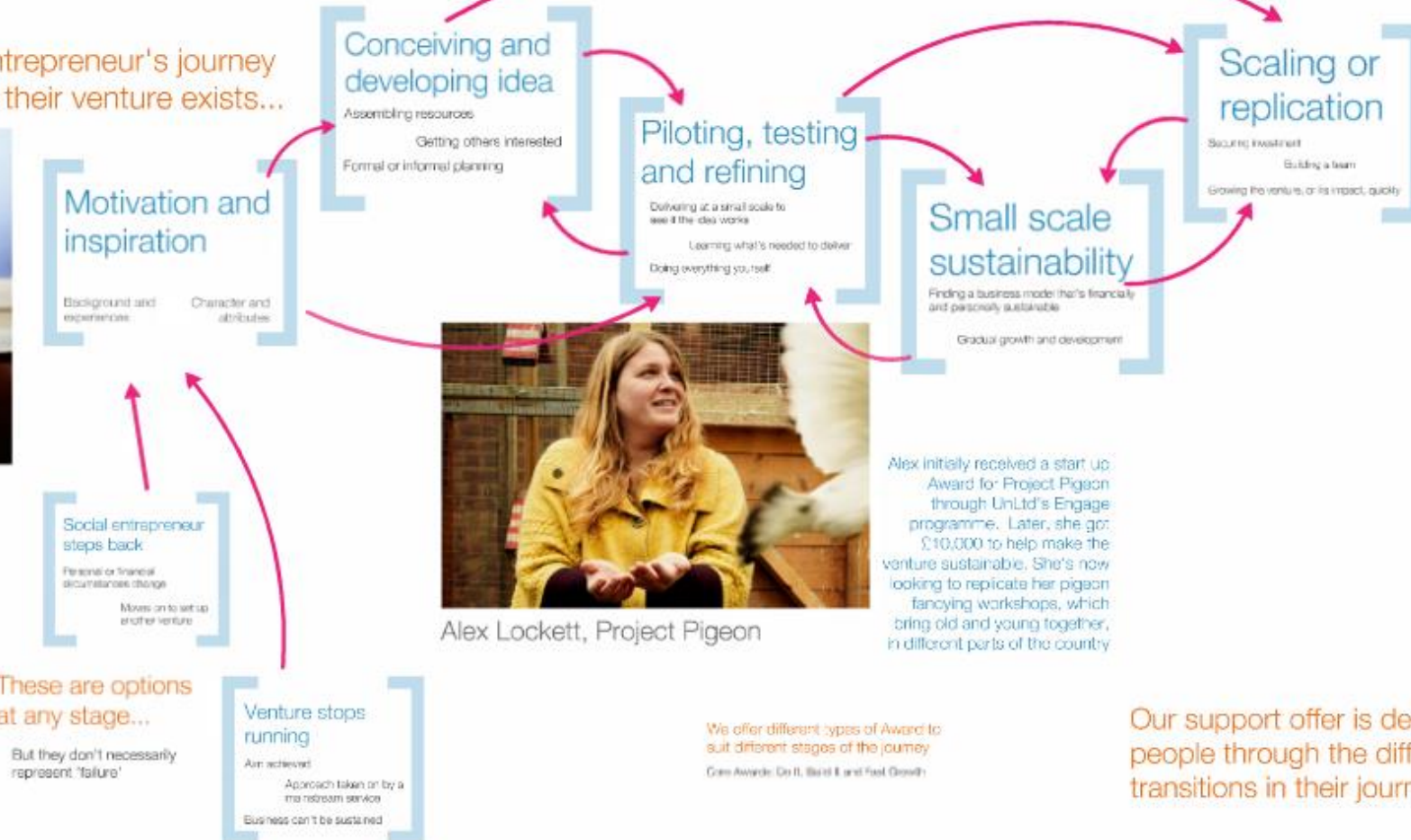
They can be moved through at any speed, and in pretty much any order

We don't assume that everyone will go through all stages  
Or even that they want to

The social entrepreneur's journey starts before their venture exists...



Gary Staniforth, Hidden Voices



Alex Lockett, Project Pigeon

Alex initially received a start up Award for Project Pigeon through UnLtd's Engage programme. Later, she got £10,000 to help make the venture sustainable. She's now looking to replicate her pigeon fancying workshops, which bring old and young together, in different parts of the country



Emma Morris, Beyond Youth

We offer connections to other financial and non-financial support

Pro-bono advice and mentoring  
Peer support  
Access to investors

We offer different types of Award to suit different stages of the journey  
Core Awards: Go It, Build It and Fast Growth

Our support offer is designed to help people through the different stages and transitions in their journeys



# NPI's Model



Besides, **NPI** is the

**Earliest**

Social organizations' incubator

Registered in January, 2006, in Shanghai

**Largest**

With around 250 full-time employees

Operating > 60,000 m<sup>2</sup> of start-up spaces in 13 cities

**Most Complete**

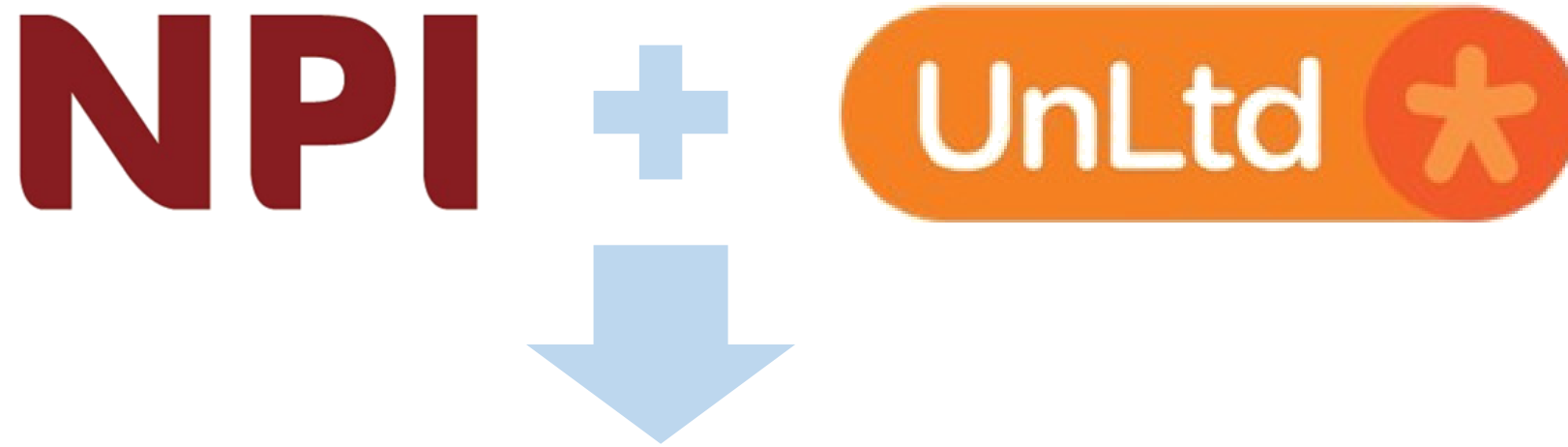
Sponsored 16 brands, covering the lifecycle of social venture

Provided support services to > 2,000 social organs and people who on the way to build up social businesses

**in China**



From June, 2013



- ✓ Strategic partnership
- ✓ To share experience, models, tools and resources
- ✓ As the members of the **Global Social Entrepreneurship Network (GSEN)**



# NPI

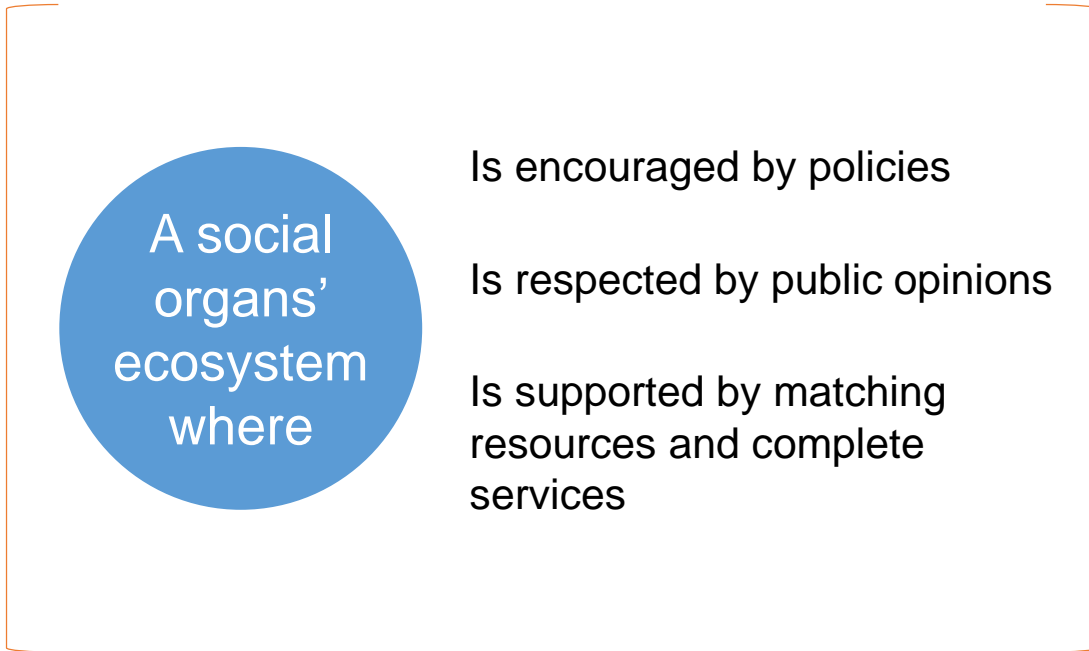


To promote social innovation and cultivate social entrepreneurs

Similar Mission

To reach out and unleash the energies of people who can transform the world in which they live: people who we call social entrepreneurs

# NPI



## Similar Vision



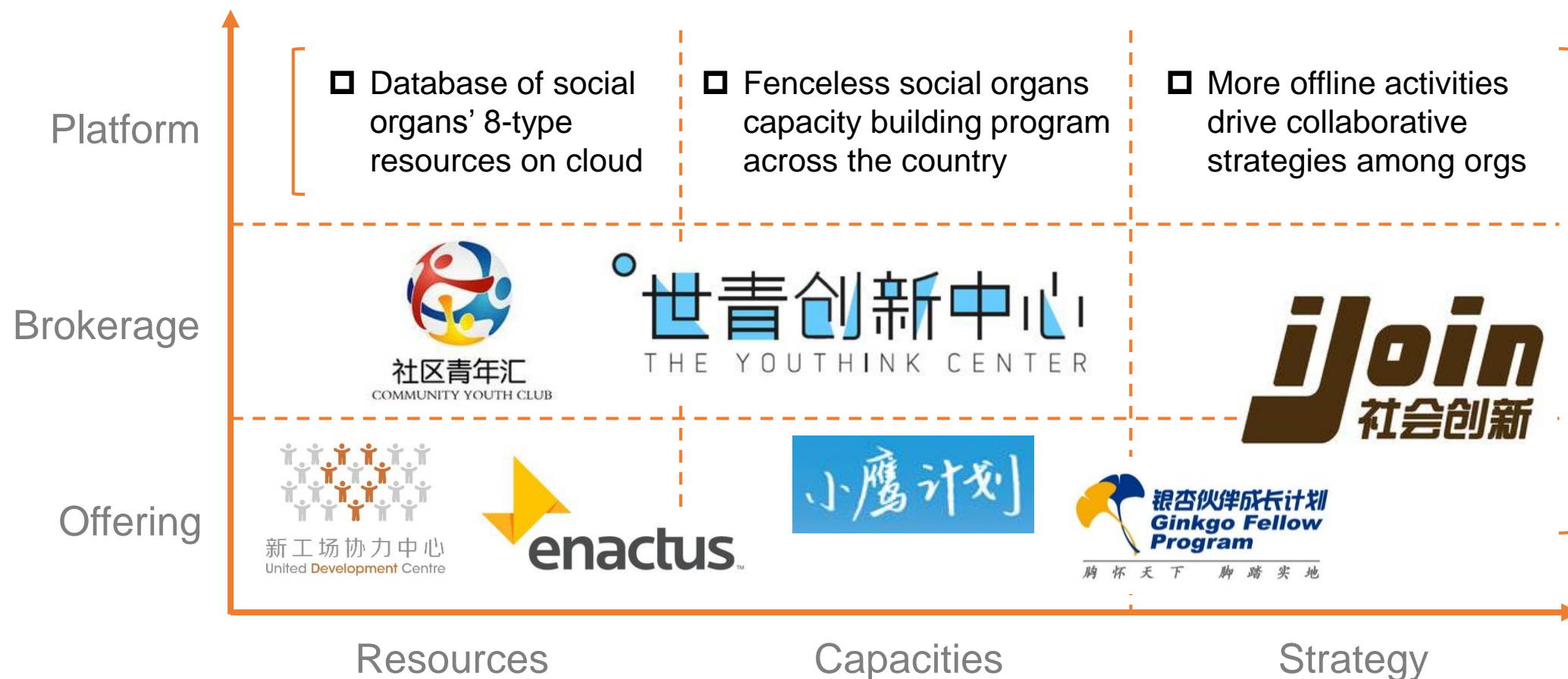
To facilitate China's  
Youth Social Venture,  
NPI is not walking alone

# Collaborating with

We utilize a **Matrix** to

- ☑ Analyze the support ecosystem
- ☑ Position ourselves
- ☑ Promote more cooperatives

# Collaborative Matrix of NPI in China



With a **Global** vision,  
**UnLtd**  and **NPI** is seeking  
more **S**upport **A**gencies

Some  
members  
of **GSEN**





“ It is important for a new initiative to add genuinely new value. There are already international networks in many parts of the social economy ...

“ The specific value of the **GSEF** initiative is that it brings together all these networks into a whole-system approach. ”

Cliff Prior, CEO of UnLtd

# THANKS !

We expect more new collaborations!

with GSEN: [global@unltd.org.uk](mailto:global@unltd.org.uk)

with NPI: [weina.wang@npi.org.cn](mailto:weina.wang@npi.org.cn)